

**TECHNOLOGY INSURANCE COMPANY, INC.**

*59 Maiden Lane 43rd Floor  
New York, NY 10038*

---

WORKERS' COMPENSATION  
*and*  
EMPLOYERS' LIABILITY INSURANCE POLICY

In Witness Whereof, we have caused this policy to be executed and attested, and, if required by state law, this policy shall not be valid unless countersigned by our authorized representative.



Stephen Ungar, Secretary



Christopher H. Foy, President

To obtain information, please contact your agent or Technology Insurance Company, Inc. at **877-528-7878**. You may also write Technology Insurance Company, Inc. Consumer Relations at:

800 Superior Avenue East, 21st Floor  
Cleveland, OH 44114

# AmCares

## AmCares 24/7 Nurse Line: Your First Step for Injured Employees

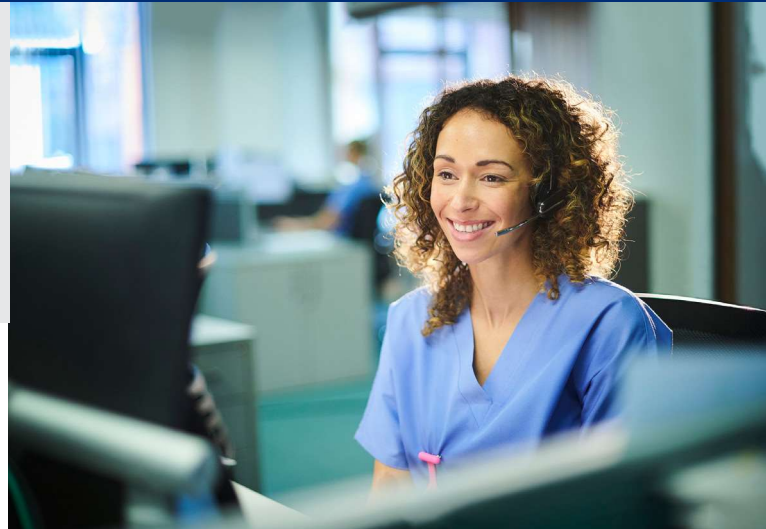
AmCares® offers a 24/7 nurse line to all policyholders at no additional cost. Nurses use nationally recognized triage guidelines to identify the appropriate level of care. Make AmCares your first step after a workplace injury, as nurses will assess the situation and recommend care options, including:

- Self-Care
- Telemedicine
- Occupational Clinic
- Urgent Care
- Emergency Room

### Key Takeaways

- With a single phone call, AmTrust insureds can report a claim and have their employee speak to a nurse.
- If the injured employee is available by phone and has not already received care, call 888-239-3909 and select the option to speak to a nurse for timely assessment and care recommendations.
- A nurse will inform about in-network providers if treatment is necessary.

Please contact [Amcaresnursetriage@amtrustgroup.com](mailto:Amcaresnursetriage@amtrustgroup.com) with any questions.



### Benefits



#### Immediate access to nurse expertise

Nurse will conduct assessment and provide appropriate care recommendations



#### Easy claim reporting

One call to create claim & speak to a nurse



#### Decrease unnecessary ER visits & wait time

Ensure appropriate level of care is selected for the injury



#### Access to quality network providers

Recommend providers near the injured employee, if needed

# Workers' Compensation Claim Reporting Information



## 24/7 Claim Reporting for All States



### Website

[www.amtrustfinancial.com](http://www.amtrustfinancial.com)



### Phone Number

(888)239-3909



### Nurse Triage

If the injured employee is available by phone and has not already received medical care, call 888.239.3909 to report claim and select the option to speak to a nurse to discuss treatment options.



### Information Required for All Claims Reported

1. Name of the insured and policy number
2. Name and contact information of injured worker
3. Date, time and place of accident
4. Description of accident or incident
5. Name, phone, and/or email of person making the report
6. Any information on the injured workers lost time

Early claim reporting is essential to a better claim outcome. Don't delay reporting if you do not have all the details.



### How do I help my injured worker find a doctor?

- If nurse triage is utilized per the above, assistance will be provided in locating an in-network facility in the area
- We also offer an online physician search for all states, [www.talispoint.com/amtrust/external](http://www.talispoint.com/amtrust/external)
- For California, [www.talispoint.com/amtrust/campn](http://www.talispoint.com/amtrust/campn)
- For CO, GA, PA & TN, please refer to panel provided by AmTrust via mail or email



### How does my injured employee receive prescription medications related to the accident/injury?

- Refer to the claims kit for your state at [www.talispoint.com/amtrust/external](http://www.talispoint.com/amtrust/external) for a First Fill card for your injured employee to use at the pharmacy to cover the cost of approved medication.

## Timely Reporting

When a work-related injury occurs, it is important to act immediately. Timely reporting of a new claim helps to provide a smooth and successful claim process for both you and your injured worker.



### We're Here To Help

After your claim has been filed, we may be in touch to obtain additional information. Our goal is to offer a smooth and hassle-free experience – from your first contact to the claims conclusion. Feel free to also call us with any questions. We're here to help.



### Relax And Stay Positive

You have the assurance of our knowledge, expertise, and understanding of the claim process. We're with you all the way.

Thank you for placing your Workers' Compensation Coverage with AmTrust. For your convenience, we now offer electronic versions of our Claims Kits. Please see the instructions and FAQs below for more information.



### Where's my claims kit?

All the States' Claims Kits are online for insured to download which contains all the necessary WC notices. Visit the Talispoint Direct Link at [www.talispoint.com/amtrust/external/](http://www.talispoint.com/amtrust/external/)

- Click State Rules/Kits, choose corresponding state and open the PDF link to view and print.



### I have an injured worker, how do I find a doctor?

We will provide completed Panel of Physicians for the 4 states that require a panel to be posted (CO, GA, PA & TN). We offer our online physician search for all other states.

There are 3 ways to access this information:

1. Visit the Talispoint Direct Link at [www.talispoint.com/amtrust/external/](http://www.talispoint.com/amtrust/external/)
2. California MPN: [www.talispoint.com/amtrust/campn/](http://www.talispoint.com/amtrust/campn/)
3. Visit the AmTrust Financial Website at [www.amtrustfinancial.com](http://www.amtrustfinancial.com)
  - Click Claims
  - Click Provider Directory or California MPN under "Find a Provider"
  - State specific laws for directing medical treatment are listed on the State Rules Tab
  - Search for physicians by Name, Address or Region



### Where are my posting notices?

All states claim kits are available online, including applicable postings. There are 4 states (CO, CT, FL & MD) we cannot place online. For these states, we will mail additional posting notices to the main address on the policy.



### I have a question about my claims kit, posting notice, panel or accessing the website's physician searches, who do I contact?

You may send an email to [clientservices@amtrustgroup.com](mailto:clientservices@amtrustgroup.com). Please make sure to include your policy number along with your request.



### I have a question about a claim or injured worker, who do I contact?

Customer Service can direct you to the appropriate person. Please contact them at 888-239-3909.



AmTrust North America  
An AmTrust Financial Company

Dear Policyholder,

In an effort to provide AmTrust customers with a variety of billing options, the below fee structure will be applied to your new policy.

This fee structure helps customers to meet payment due dates, ensures that valid and properly funded payments are submitted, and provides an incentive for paid-in-full options.

**Our fee structure is as follows:**

Fee Title	Fee Amount	Description
Returned Payment Fee	\$25	A returned payment fee applied to any returned payment.
Late Fee	\$20	Late fee applied if payment not received on or before payment due date.
Installment Fee	\$15	A "paper" billing fee that is assessed for each mailed installment invoice. Excludes down payment and annual payment plans. Fee is billed at the account level.
Reinstatement Fee	\$50	Fee applied upon reinstatement of a non-payment cancellation.
EFT Fee	\$3	An "electronic" billing fee that is assessed for each ACH Direct Debit transaction. Fee is billed at the account level.

\*Fee amount may vary by state and program of business

For policyholders who choose to pay their annual premium on installments, we plan to implement an installment fee, which will be displayed on your renewal invoice.

Thank you for your attention. If you have any questions, feel free to contact our Customer Service Department at 877.528.7878.

We value you as a policyholder and appreciate the opportunity to serve you.

Sincerely,

AmTrust North America  
Customer Service Department

# Technology Insurance Company, Inc.

A Stock Insurance Company

WORKERS COMPENSATION  
AND EMPLOYERS LIABILITY  
INSURANCE POLICY

WC 99 00 01 B  
1 of 5  
INFORMATION PAGE

Ncci Code: 39071

1. Insured: **Policy Number: TWC4733671**  
Lake Overlook Unit 4 Association, Inc.  
28050 US HWY 19 N  
Suite 509  
Clearwater, FL 33761  
Other workplaces not shown above: Individual Partnership  
None X Corporation or \_\_\_\_\_  
Federal Tax ID: 591766174  
Producer: Risk Id:  
Northeast Underwriters, Inc. Renewal of: New  
4790 1st Street North  
St. Petersburg, FL 33703

2. The policy period is from 12/19/2025 to 12/19/2026 12:01 a.m. at the insured's mailing address.

3. A. Workers Compensation Insurance: Part One of the policy applies to the Workers Compensation Law of the states listed here: Florida  
B. Employers Liability Insurance: Part Two of the policy applies to work in each state listed in item 3.A. The limits of our liability under Part Two are:  

State	Bodily Injury by Accident	Bodily Injury by Disease	Bodily Injury by Disease
	\$500,000 each accident	\$500,000 policy limit	\$500,000 each employee

  
C. Other States Insurance: Part Three of the policy applies to the states, if any, listed here:  
All states except ND, OH, WA, WY and State(s) Designated in Item 3.A  
D. This policy includes these endorsements and schedules: See Extension of Information Page

4. The premium for this policy will be determined by our Manuals of Rules, Classifications, Rates and Rating Plans. All information required below is subject to verification and change by audit.

See Extension of Information Page	
<b>TOTAL ESTIMATED ANNUAL PREMIUM</b>	<b>503</b>
<b>STATE ASSESSMENT</b>	<b>0</b>
<b>TOTAL ESTIMATED COST</b>	<b>503</b>
Minimum Premium	503
Deposit Premium	503

Issue Date: 12/18/2025

Countersigned by: \_\_\_\_\_  
Authorized Representative

---

**Insured: Lake Overlook Unit 4 Association, Inc.**

**Policy Number: TWC4733671**

**EXTENSION OF INFORMATION PAGE FOR ITEM #1  
ITEM 1: NAMED INSURED and WORKPLACES**

---

**NAMED INSURED:** Lake Overlook Unit 4 Association, Inc.      Fein: 591766174  
**WORKPLACES:** Location Number 1.  
4595 Chancellor St Ne  
Saint Petersburg, FL 33703

Insured: Lake Overlook Unit 4 Association, Inc.

Policy Number: TWC4733671

---

**EXTENSION OF INFORMATION PAGE FOR ITEM #3.D  
ITEM 3.D: ENDORSEMENT SCHEDULE**

---

State	Form Number	Description
	WC990001B	DECLARATIONS PAGE
	WC000000C	WORKERS COMPENSATION AND EMPLOYERS LIABILITY INSURANCE POLICY
	WC000311A	VOLUNTARY COMPENSATION AND EMPLOYERS LIABILITY COVERAGE
	WC000404	PENDING RATE CHANGE ENDORSEMENT
	WC000406A	PREMIUM DISCOUNT ENDORSEMENT
	WC000414A	NOTIFICATION OF CHANGE IN OWNERSHIP ENDORSEMENT
FL	WC090303	FLORIDA EMPLOYERS LIABILITY COVERAGE ENDORSEMENT
FL	WC090402A	FLORIDA EXPERIENCE RATING MODIFICATION FACTOR ENDORSEMENT
FL	WC090403C	FLORIDA TERRORISM RISK INSURANCE PROGRAM REAUTHORIZATION ACT ENDORSEMENT
FL	WC090407A	FLORIDA NON-COOPERATION WITH PREMIUM AUDIT ENDORSEMENT
FL	WC090408A	FLORIDA INSUFFICIENT FUNDS ENDORSEMENT
FL	WC090409	FLORIDA PREMIUM DUE DATE ENDORSEMENT
FL	WC090606	FLORIDA EMPLOYMENT AND WAGE INFORMATION RELEASE ENDORSEMENT
FL	WC090609A	FLORIDA CANCELLATION AND NONRENEWAL ENDORSEMENT

Insured: Lake Overlook Unit 4 Association, Inc.

Policy Number: TWC4733671

**EXTENSION OF INFORMATION PAGE FOR ITEM #4  
ITEM 4: SCHEDULE OF PREMIUMS**

Classifications	# of Emps	Code No.	Premium Basis Total Estimated Annual Remuneration	Rate Per \$100 of Remun.	Estimated Annual Premium
<b>Florida</b>					
Condominiums or Cooperatives—All Other Employees	1	9015	1	2.68	
Manual Premium					
Total Manual Premium					
Premium for Increased Limits Part Two: 1.1% (500/500/500)		9807			0
Premium to Equal Increased Limits Minimum Charge		9848			75
Total Premium Subject To Experience Modification					75
Experience Modification N/A					75
Terrorism Risk Insurance Act 1%		9740			0
Balance to Minimum Premium		0990			268
Expense Constant		0900			160
Total FL Premium					503
Total FL Cost					503
<b>TOTAL ESTIMATED ANNUAL PREMIUM</b>					<b>503</b>
<b>STATE ASSESSMENT</b>					<b>0</b>
<b>TOTAL COST</b>					<b>503</b>

Insured: Lake Overlook Unit 4 Association, Inc.

Policy Number: TWC4733671

**PAYMENT SCHEDULE**

Statement Closing Date	Payment Due Date	Description	Amount Due
	1/3/2026	Annual Premium Due	\$503.00
			<u>Total Cost \$503.00</u>

WORKERS COMPENSATION AND EMPLOYERS LIABILITY INSURANCE POLICY

In return for the payment of the premium and subject to all terms of this policy, we agree with you as follows:

GENERAL SECTION

A. The Policy

This policy includes at its effective date the Information Page and all endorsements and schedules listed there. It is a contract of insurance between you (the employer named in Item 1 of the Information Page) and us (the insurer named on the Information Page). The only agreements relating to this insurance are stated in this policy. The terms of this policy may not be changed or waived except by endorsement issued by us to be part of this policy.

B. Who is Insured

You are insured if you are an employer named in Item 1 of the Information Page. If that employer is a partnership, and if you are one of its partners, you are insured, but only in your capacity as an employer of the partnership's employees.

C. Workers Compensation Law

Workers Compensation Law means the workers or workmen's compensation law and occupational disease law of each state or territory named in Item 3.A. of the Information Page. It includes any amendments to that law which are in effect during the policy period. It does not include any federal workers or workmen's compensation law, any federal occupational disease law or the provisions of any law that provide nonoccupational disability benefits.

D. State

State means any state of the United States of America, and the District of Columbia.

E. Locations

This policy covers all of your workplaces listed in Items 1 or 4 of the Information Page; and it covers all other workplaces in Item 3.A. states unless you have other insurance or are self-insured for such workplaces.

PART ONE WORKERS COMPENSATION INSURANCE

A. How This Insurance Applies

This workers compensation insurance applies to bodily injury by accident or bodily injury by disease. Bodily injury includes resulting death.

- 1. Bodily injury by accident must occur during the policy period.
2. Bodily injury by disease must be caused or aggravated by the conditions of your employment. The employee's last day of last exposure to the conditions causing or aggravating such bodily injury by disease must occur during the policy period.

B. We Will Pay

We will pay promptly when due the benefits required of you by the workers compensation law.

C. We Will Defend

We have the right and duty to defend at our expense any claim, proceeding or suit against you for benefits payable by this insurance. We have the right to investigate and settle these claims, proceedings or suits.

We have no duty to defend a claim, proceeding or suit that is not covered by this insurance.

D. We Will Also Pay

We will also pay these costs, in addition to other amounts payable under this insurance, as part of any claim, proceeding or suit we defend:

- 1. reasonable expenses incurred at our request, but not loss of earnings;
2. premiums for bonds to release attachments and for appeal bonds in bond amounts up to the amount payable under this insurance;
3. litigation costs taxed against you;
4. interest on a judgment as required by law until we offer the amount due under this insurance; and
5. expenses we incur.

E. Other Insurance

We will not pay more than our share of benefits and costs covered by this insurance and other

(Ed. 1-15)

insurance or self-insurance. Subject to any limits of liability that may apply, all shares will be equal until the loss is paid. If any insurance or self-insurance is exhausted, the shares of all remaining insurance will be equal until the loss is paid.

#### F. **Payments You Must Make**

You are responsible for any payments in excess of the benefits regularly provided by the workers compensation law including those required because:

1. of your serious and willful misconduct;
2. you knowingly employ an employee in violation of law;
3. you fail to comply with a health or safety law or regulation; or
4. you discharge, coerce or otherwise discriminate against any employee in violation of the workers compensation law.

If we make any payments in excess of the benefits regularly provided by the workers compensation law on your behalf, you will reimburse us promptly.

#### G. **Recovery From Others**

We have your rights, and the rights of persons entitled to the benefits of this insurance, to recover our payments from anyone liable for the injury. You will do everything necessary to protect those rights for us and to help us enforce them.

#### H. **Statutory Provisions**

These statements apply where they are required by law.

1. As between an injured worker and us, we have notice of the injury when you have notice.
2. Your default or the bankruptcy or insolvency of you or your estate will not relieve us of our duties under this insurance after an injury occurs.
3. We are directly and primarily liable to any person entitled to the benefits payable by this insurance. Those persons may enforce our duties; so may an agency authorized by law. Enforcement may be against us or against you and us.
4. Jurisdiction over you is jurisdiction over us for purposes of the workers compensation law. We are bound by decisions against you under that law, subject to the provisions of this policy that are not in conflict with that law.
5. This insurance conforms to the parts of the

workers compensation law that apply to:

- a. benefits payable by this insurance;
- b. special taxes, payments into security or other special funds, and assessments payable by us under that law.

6. Terms of this insurance that conflict with the workers compensation law are changed by this statement to conform to that law.

Nothing in these paragraphs relieves you of your duties under this policy.

## PART TWO

### EMPLOYERS LIABILITY INSURANCE

#### A. **How This Insurance Applies**

This employers liability insurance applies to bodily injury by accident or bodily injury by disease. Bodily injury includes resulting death.

1. The bodily injury must arise out of and in the course of the injured employee's employment by you.
2. The employment must be necessary or incidental to your work in a state or territory listed in Item 3.A. of the Information Page.
3. Bodily injury by accident must occur during the policy period.
4. Bodily injury by disease must be caused or aggravated by the conditions of your employment. The employee's last day of last exposure to the conditions causing or aggravating such bodily injury by disease must occur during the policy period.
5. If you are sued, the original suit and any related legal actions for damages for bodily injury by accident or by disease must be brought in the United States of America, its territories or possessions, or Canada.

#### B. **We Will Pay**

We will pay all sums that you legally must pay as damages because of bodily injury to your employees, provided the bodily injury is covered by this Employers Liability Insurance.

The damages we will pay, where recovery is permitted by law, include damages:

1. For which you are liable to a third party by reason of a claim or suit against you by that third party to recover the damages claimed against

such third party as a result of injury to your employee;

2. For care and loss of services; and
3. For consequential bodily injury to a spouse, child, parent, brother or sister of the injured employee; provided that these damages are the direct consequence of bodily injury that arises out of and in the course of the injured employee's employment by you; and
4. Because of bodily injury to your employee that arises out of and in the course of employment, claimed against you in a capacity other than as employer.

### C. Exclusions

This insurance does not cover:

1. Liability assumed under a contract. This exclusion does not apply to a warranty that your work will be done in a workmanlike manner;
2. Punitive or exemplary damages because of bodily injury to an employee employed in violation of law;
3. Bodily injury to an employee while employed in violation of law with your actual knowledge or the actual knowledge of any of your executive officers;
4. Any obligation imposed by a workers compensation, occupational disease, unemployment compensation, or disability benefits law, or any similar law;
5. Bodily injury intentionally caused or aggravated by you;
6. Bodily injury occurring outside the United States of America, its territories or possessions, and Canada. This exclusion does not apply to bodily injury to a citizen or resident of the United States of America or Canada who is temporarily outside these countries;
7. Damages arising out of coercion, criticism, demotion, evaluation, reassignment, discipline, defamation, harassment, humiliation, discrimination against or termination of any employee, or any personnel practices, policies, acts or omissions;
8. Bodily injury to any person in work subject to the Longshore and Harbor Workers' Compensation Act (33 U.S.C. Sections 901 et seq.), the Nonappropriated Fund Instrumentalities Act (5 U.S.C. Sections 8171 et seq.), the Outer Continental Shelf Lands Act (43 U.S.C. Sections 1331 et seq.), the Defense Base Act (42 U.S.C. Sections 1651–1654), the Federal Mine Safety and Health Act (30 U.S.C. Sections 801 et seq. and 901–944), any other federal workers or workmen's compensation law or other federal occupational disease law, or any amendments to these laws;

9. Bodily injury to any person in work subject to the Federal Employers' Liability Act (45 U.S.C. Sections 51 et seq.), any other federal laws obligating an employer to pay damages to an employee due to bodily injury arising out of or in the course of employment, or any amendments to those laws;
10. Bodily injury to a master or member of the crew of any vessel, and does not cover punitive damages related to your duty or obligation to provide transportation, wages, maintenance, and cure under any applicable maritime law;
11. Fines or penalties imposed for violation of federal or state law; and
12. Damages payable under the Migrant and Seasonal Agricultural Worker Protection Act (29 U.S.C. Sections 1801 et seq.) and under any other federal law awarding damages for violation of those laws or regulations issued thereunder, and any amendments to those laws.

### D. We Will Defend

We have the right and duty to defend, at our expense, any claim, proceeding or suit against you for damages payable by this insurance. We have the right to investigate and settle these claims, proceedings and suits.

We have no duty to defend a claim, proceeding or suit that is not covered by this insurance. We have no duty to defend or continue defending after we have paid our applicable limit of liability under this insurance.

### E. We Will Also Pay

We will also pay these costs, in addition to other amounts payable under this insurance, as part of any claim, proceeding, or suit we defend:

1. Reasonable expenses incurred at our request, but not loss of earnings;
2. Premiums for bonds to release attachments and for appeal bonds in bond amounts up to the limit of our liability under this insurance;
3. Litigation costs taxed against you;
4. Interest on a judgment as required by law until we offer the amount due under this insurance; and
5. Expenses we incur.

(Ed. 1-15)

**F. Other Insurance**

We will not pay more than our share of damages and costs covered by this insurance and other insurance or self-insurance. Subject to any limits of liability that apply, all shares will be equal until the loss is paid. If any insurance or self-insurance is exhausted, the shares of all remaining insurance and self-insurance will be equal until the loss is paid.

**G. Limits of Liability**

Our liability to pay for damages is limited. Our limits of liability are shown in Item 3.B. of the Information Page. They apply as explained below.

- 1. **Bodily Injury by Accident.** The limit shown for "bodily injury by accident—each accident" is the most we will pay for all damages covered by this insurance because of bodily injury to one or more employees in any one accident.

A disease is not bodily injury by accident unless it results directly from bodily injury by accident.

- 2. **Bodily Injury by Disease.** The limit shown for "bodily injury by disease—policy limit" is the most we will pay for all damages covered by this insurance and arising out of bodily injury by disease, regardless of the number of employees who sustain bodily injury by disease. The limit shown for "bodily injury by disease—each employee" is the most we will pay for all damages because of bodily injury by disease to any one employee.

Bodily injury by disease does not include disease that results directly from a bodily injury by accident.

- 3. We will not pay any claims for damages after we have paid the applicable limit of our liability under this insurance.

**H. Recovery From Others**

We have your rights to recover our payment from anyone liable for an injury covered by this insurance. You will do everything necessary to protect those rights for us and to help us enforce them.

**I. Actions Against Us**

There will be no right of action against us under this insurance unless:

- 1. You have complied with all the terms of this policy; and

- 2. The amount you owe has been determined with our consent or by actual trial and final judgment. This insurance does not give anyone the right to add us as a defendant in an action against you to determine your liability. The bankruptcy or insolvency of you or your estate will not relieve us of our obligations under this Part.

**PART THREE  
OTHER STATES INSURANCE**

**A. How This Insurance Applies**

- 1. This other states insurance applies only if one or more states are shown in Item 3.C. of the Information Page.
- 2. If you begin work in any one of those states after the effective date of this policy and are not insured or are not self-insured for such work, all provisions of the policy will apply as though that state were listed in Item 3.A. of the Information Page.
- 3. We will reimburse you for the benefits required by the workers compensation law of that state if we are not permitted to pay the benefits directly to persons entitled to them.
- 4. If you have work on the effective date of this policy in any state not listed in Item 3.A. of the Information Page, coverage will not be afforded for that state unless we are notified within thirty days.

**B. Notice**

Tell us at once if you begin work in any state listed in Item 3.C. of the Information Page.

**PART FOUR  
YOUR DUTIES IF INJURY OCCURS**

Tell us at once if injury occurs that may be covered by this policy. Your other duties are listed here.

- 1. Provide for immediate medical and other services required by the workers compensation law.
- 2. Give us or our agent the names and addresses of the injured persons and of witnesses, and other information we may need.
- 3. Promptly give us all notices, demands and legal

papers related to the injury, claim, proceeding or suit.

4. Cooperate with us and assist us, as we may request, in the investigation, settlement or defense of any claim, proceeding or suit.
5. Do nothing after an injury occurs that would interfere with our right to recover from others.
6. Do not voluntarily make payments, assume obligations or incur expenses, except at your own cost.

## PART FIVE PREMIUM

### A. Our Manuals

All premium for this policy will be determined by our manuals of rules, rates, rating plans and classifications. We may change our manuals and apply the changes to this policy if authorized by law or a governmental agency regulating this insurance.

### B. Classifications

Item 4 of the Information Page shows the rate and premium basis for certain business or work classifications. These classifications were assigned based on an estimate of the exposures you would have during the policy period. If your actual exposures are not properly described by those classifications, we will assign proper classifications, rates and premium basis by endorsement to this policy.

### C. Remuneration

Premium for each work classification is determined by multiplying a rate times a premium basis. Remuneration is the most common premium basis. This premium basis includes payroll and all other remuneration paid or payable during the policy period for the services of:

1. all your officers and employees engaged in work covered by this policy; and
2. all other persons engaged in work that could make us liable under Part One (Workers Compensation Insurance) of this policy. If you do not have payroll records for these persons, the contract price for their services and materials may be used as the premium basis. This paragraph 2 will not apply if you give us proof that the employers of these persons lawfully secured their workers compensation obligations.

### D. Premium Payments

You will pay all premium when due. You will pay the premium even if part or all of a workers compensation law is not valid.

### E. Final Premium

The premium shown on the Information Page, schedules, and endorsements is an estimate. The final premium will be determined after this policy ends by using the actual, not the estimated, premium basis and the proper classifications and rates that lawfully apply to the business and work covered by this policy. If the final premium is more than the premium you paid to us, you must pay us the balance. If it is less, we will refund the balance to you. The final premium will not be less than the highest minimum premium for the classifications covered by this policy.

If this policy is canceled, final premium will be determined in the following way unless our manuals provide otherwise:

1. If we cancel, final premium will be calculated pro rata based on the time this policy was in force. Final premium will not be less than the pro rata share of the minimum premium.
2. If you cancel, final premium will be more than pro rata; it will be based on the time this policy was in force, and increased by our short-rate cancellation table and procedure. Final premium will not be less than the minimum premium.

### F. Records

You will keep records of information needed to compute premium. You will provide us with copies of those records when we ask for them.

### G. Audit

You will let us examine and audit all your records that relate to this policy. These records include ledgers, journals, registers, vouchers, contracts, tax reports, payroll and disbursement records, and programs for storing and retrieving data. We may conduct the audits during regular business hours during the policy period and within three years after the policy period ends. Information developed by audit will be used to determine final premium. Insurance rate service organizations have the same rights we have under this provision.

**PART SIX  
CONDITIONS**

**A. Inspection**

We have the right, but are not obliged to inspect your workplaces at any time. Our inspections are not safety inspections. They relate only to the insurability of the workplaces and the premiums to be charged. We may give you reports on the conditions we find. We may also recommend changes. While they may help reduce losses, we do not undertake to perform the duty of any person to provide for the health or safety of your employees or the public. We do not warrant that your workplaces are safe or healthful or that they comply with laws, regulations, codes or standards. Insurance rate service organizations have the same rights we have under this provision.

**B. Long Term Policy**

If the policy period is longer than one year and sixteen days, all provisions of this policy will apply as though a new policy were issued on each annual anniversary that this policy is in force.

**C. Transfer of Your Rights and Duties**

Your rights or duties under this policy may not be transferred without our written consent.

If you die and we receive notice within thirty days after your death, we will cover your legal representative as insured.

**D. Cancellation**

1. You may cancel this policy. You must mail or deliver advance written notice to us stating when the cancellation is to take effect.
2. We may cancel this policy. We must mail or deliver to you not less than ten days advance written notice stating when the cancellation is to take effect. Mailing that notice to you at your mailing address shown in Item 1 of the Information Page will be sufficient to prove notice.
3. The policy period will end on the day and hour stated in the cancellation notice.
4. Any of these provisions that conflict with a law that controls the cancellation of the insurance in this policy is changed by this statement to comply with the law.

**E. Sole Representative**

The insured first named in Item 1 of the Information Page will act on behalf of all insureds to change this policy, receive return premium, and give or receive notice of cancellation.

**VOLUNTARY COMPENSATION AND EMPLOYERS LIABILITY COVERAGE ENDORSEMENT**

This endorsement adds Voluntary Compensation Insurance to the policy.

**A. How This Insurance Applies**

This insurance applies to bodily injury by accident or bodily injury by disease. Bodily injury includes resulting death.

1. The bodily injury must be sustained by an employee included in the group of employees described in the Schedule.
2. The bodily injury must arise out of and in the course of employment necessary or incidental to work in a state listed in the Schedule.
3. The bodily injury must occur in the United States of America, its territories or possessions, or Canada, and may occur elsewhere if the employee is a United States or Canadian citizen temporarily away from those places.
4. Bodily injury by accident must occur during the policy period.
5. Bodily injury by disease must be caused or aggravated by the conditions of your employment. The employee's last day of last exposure to the conditions causing or aggravating such bodily injury by disease must occur during the policy period.

**B. We Will Pay**

We will pay an amount equal to the benefits that would be required of you if you and your employees described in the Schedule were subject to the workers compensation law shown in the Schedule. We will pay those amounts to the persons who would be entitled to them under the law.

**C. Exclusions**

This insurance does not cover:

1. any obligation imposed by a workers compensation or occupational disease law, or any similar law.
2. bodily injury intentionally caused or aggravated by you.

**D. Before We Pay**

Before we pay benefits to the persons entitled to them, they must:

1. Release you and us, in writing, of all responsibility for the injury or death.
2. Transfer to us their right to recover from others who may be responsible for the injury or death.
3. Cooperate with us and do everything necessary to enable us to enforce the right to recover from others.

If the persons entitled to the benefits of this insurance fail to do those things, our duty to pay ends at once. If they claim damages from you or from us for the injury or death, our duty to pay ends at once.

**E. Recovery From Others**

If we make a recovery from others, we will keep an amount equal to our expenses of recovery and the benefits we paid. We will pay the balance to the persons entitled to it. If the persons entitled to the benefits of this insurance make a recovery from others, they must reimburse us for the benefits we paid them.

**F. Employers Liability Insurance**

Part Two (Employers Liability Insurance) applies to bodily injury covered by this endorsement as though the State of Employment shown in the Schedule were shown in Item 3.A. of the Information Page.

Schedule

<b>Employees</b>	<b>State of Employment</b>	<b>Designated Workers Compensation Law</b>
All Board of Directors, Officers, and Appointed Committee Members while in the course and scope of duties as directed and pre-approved by the Association Board of Directors	Any state shown in item 3a of the information page	State where the injury takes place

This endorsement changes the policy to which it is attached and is effective on the date issued unless otherwise stated.

Endorsement Effective 12/19/2025

Policy No. TWC4733671

Endorsement No.

Insured Lake Overlook Unit 4 Association, Inc

Premium \$503

Insurance Company Technology Insurance Company, Inc.

Countersigned by \_\_\_\_\_

PENDING RATE CHANGE ENDORSEMENT

A rate change filing is being considered by the proper regulatory authority. The filing may result in rates different from the rates shown on the policy. If it does, we will issue an endorsement to show the new rates and their effective date.

If only one state is shown in Item 3.A. of the Information Page, this endorsement applies to that state. If more than one state is shown there, this endorsement applies only in the state shown in the Schedule.

Schedule

State

FL

This endorsement changes the policy to which it is attached and is effective on the date issued unless otherwise stated.  
**(The information below is required only when this endorsement is issued subsequent to preparation of the policy.)**

Endorsement Effective	12/19/2025	Policy No.	TWC4733671	Endorsement No.	0
Insured	Lake Overlook Unit 4 Association, Inc.			Premium \$	503
Insurance Company	Technology Insurance Company, Inc.				

Countersigned by \_\_\_\_\_

PREMIUM DISCOUNT ENDORSEMENT

The premium for this policy and the policies, if any, listed in Item 3 of the Schedule may be eligible for a discount. This endorsement shows your estimated discount in Items 1 or 2 of the Schedule. The final calculation of premium discount will be determined by our manuals and your premium basis as determined by audit. Premium subject to retrospective rating is not subject to premium discount.

Schedule

1. State	<b>Estimated Eligible Premium</b>			
	First	Next	Next	Balance
Florida	\$10,000 0%	\$200,000 9.1%	\$1,750,000 11.3%	12.3%

2. Average percentage discount: 0 %

3. Other policies:

4. If there are no entries in Items 1, 2 and 3 of the Schedule, see the Premium Discount Endorsement attached to your policy number:

This endorsement changes the policy to which it is attached and is effective on the date issued unless otherwise stated.  
**(The information below is required only when this endorsement is issued subsequent to preparation of the policy.)**

Endorsement Effective	12/19/2025	Policy No.	TWC4733671	Endorsement No.	0
Insured	Lake Overlook Unit 4 Association, Inc.			Premium \$	503
Insurance Company	Technology Insurance Company, Inc.				

Countersigned by \_\_\_\_\_

**90-DAY REPORTING REQUIREMENT—NOTIFICATION OF CHANGE IN OWNERSHIP ENDORSEMENT**

You must report any change in ownership to us in writing within 90 days of the date of the change. Change in ownership includes sales, purchases, other transfers, mergers, consolidations, dissolutions, formations of a new entity, and other changes provided for in the applicable experience rating plan. Experience rating is mandatory for all eligible insureds. The experience rating modification factor, if any, applicable to this policy, may change if there is a change in your ownership or in that of one or more of the entities eligible to be combined with you for experience rating purposes.

Failure to report any change in ownership, regardless of whether the change is reported within 90 days of such change, may result in revision of the experience rating modification factor used to determine your premium.

This reporting requirement applies regardless of whether an experience rating modification is currently applicable to this policy.

This endorsement changes the policy to which it is attached and is effective on the date issued unless otherwise stated. **(The information below is required only when this endorsement is issued subsequent to preparation of the policy.)**

Endorsement Effective	12/19/2025	Policy No.	TWC4733671	Endorsement No.	0
Insured	Lake Overlook Unit 4 Association, Inc.			Premium \$	503
Insurance Company	Technology Insurance Company, Inc.				

Countersigned by \_\_\_\_\_

---

**FLORIDA EMPLOYERS LIABILITY COVERAGE ENDORSEMENT**

C.Exclusion 5, Section C. of Part Two of the policy, is replaced by following:

This insurance does not cover

5.bodily injury intentionally caused or aggravated by you or which is the result of your engaging in conduct equivalent to an intentional tort, however defined, or other tortious conduct, such that you lose your immunity from civil liability under the workers compensation laws.

This endorsement changes the policy to which it is attached and is effective on the date issued unless otherwise stated.  
**(The information below is required only when this endorsement is issued subsequent to preparation of the policy.)**

Endorsement Effective	12/19/2025	Policy No.	TWC4733671	Endorsement No.	0
Insured	Lake Overlook Unit 4 Association, Inc.			Premium \$	503
Insurance Company	Technology Insurance Company, Inc.				

Countersigned by \_\_\_\_\_

**FLORIDA EXPERIENCE RATING MODIFICATION FACTOR ENDORSEMENT**

This endorsement applies because Florida is shown in Item 3.A. of the Information Page.

- A. The premium for the policy will be adjusted by an experience rating modification factor. The factor was not available when the policy was issued. The factor, if any, shown on the Information Page is an estimate. We will issue an endorsement to show the proper factor, if different from the factor shown, when it is calculated.
- B. If the factor is an increase over that shown on the Information Page, it will apply as of the policy effective date; or if the rating effective date is later than the policy effective date it will apply as of the rating effective date. Your premium will be calculated:
  - 1. Retroactively to the effective date of the policy or to the rating effective date if the rating effective date is later than the policy effective date if the adjustment is within the first 90 days of the policy effective date;
  - 2. On a pro rata basis from the date we endorsed the policy if the adjustment is more than 90 days after the effective date of the policy.  
 The adjustment will be retroactive to the effective date of the policy or to the rating effective date if the rating effective date is later than the policy effective date when:
    - a. The change in the experience rating modification factor is the result of a revision in your classifications;
    - b. The delay in the calculation of the experience rating modification factor is due to your failure to make available all your records for examination and audit as provided in Part Five—Premium, Section G. (Audit) of the policy.
- C. If the factor is a decrease from that shown on the Information Page, it will apply retroactively to the policy effective date or the rating effective date if later than the policy effective date.

This endorsement changes the policy to which it is attached and is effective on the date issued unless otherwise stated.

**(The information below is required only when this endorsement is issued subsequent to preparation of the policy.)**

Endorsement Effective	12/19/2025	Policy No.	TWC4733671	Endorsement No.	
Insured	Lake Overlook Unit 4 Association, Inc.			Premium	\$503
Insurance Company	Technology Insurance Company, Inc.	Countersigned by	_____		

**Florida Terrorism Risk Insurance Program Reauthorization Act Endorsement**

This endorsement addresses requirements of the Terrorism Risk Insurance Act of 2002 as amended by the Terrorism Risk Insurance Program Reauthorization Act of 2019.

**Definitions**

The definitions provided in this endorsement are based on and have the same meaning as the definitions in the Act. If words or phrases not defined in this endorsement are defined in the Act, the definitions in the Act will apply.

1. "Act" means the Terrorism Risk Insurance Act of 2002, which took effect on November 26, 2002, and any amendments, including any amendments resulting from the Terrorism Risk Insurance Program Reauthorization Act of 2019.
2. "Act Of Terrorism" means any act that is certified by the Secretary of the Treasury, in consultation with the Secretary of Homeland Security, and the Attorney General of the United States, as meeting all of the following requirements:
  - a. The act is an act of terrorism.
  - b. The act is violent or dangerous to human life, property, or infrastructure.
  - c. The act resulted in damage within the United States, or outside of the United States in the case of the premises of United States missions or certain air carriers or vessels.
  - d. The act has been committed by an individual or individuals as part of an effort to coerce the civilian population of the United States or to influence the policy or affect the conduct of the United States Government by coercion.
3. "Insured Loss" means any loss resulting from an act of terrorism (including an act of war, in the case of workers compensation) that is covered by primary or excess property and casualty insurance issued by an insurer if the loss occurs in the United States or at the premises of United States missions or to certain air carriers or vessels.
4. "Insurer Deductible" means, for the period beginning on January 1, 2021, and ending on December 31, 2027, an amount equal to 20% of our direct earned premiums during the immediately preceding calendar year.

**Limitation of Liability**

The Act may limit our liability to you under this policy. If aggregate Insured Losses exceed \$100,000,000,000 in a calendar year and if we have met our Insurer Deductible, we may not be liable for the payment of any portion of the amount of Insured Losses that exceeds \$100,000,000,000; and for aggregate Insured Losses up to \$100,000,000,000, we may only have to pay a pro rata share of such Insured Losses as determined by the Secretary of the Treasury.

**Policyholder Disclosure Notice**

1. Insured Losses would be partially reimbursed by the United States Government. If the aggregate industry Insured Losses occurring in any calendar year exceed \$200,000,000, the United States Government would pay 80% of our Insured Losses that exceed our Insurer Deductible.
2. Notwithstanding item 1 above, the United States Government may not have to make any payment under the Act for any portion of Insured Losses that exceed \$100,000,000,000.
3. The premium charged for the coverage for Insured Losses under this policy is included in the amount shown in Item 4 of the Information Page or the Schedule below.

Schedule

Rate per \$100 of Remuneration 0.01

This endorsement changes the policy to which it is attached and is effective on the date issued unless otherwise stated.  
**(The information below is required only when this endorsement is issued subsequent to preparation of the policy.)**

Endorsement Effective	12/19/2025	Policy No.	TWC4733671	Endorsement No.	0
Insured	Lake Overlook Unit 4 Association, Inc.			Premium \$	503
Insurance Company	Technology Insurance Company, Inc.				

Countersigned by \_\_\_\_\_

2 of 2

**Florida Non-Cooperation With Premium Audit Endorsement**

This endorsement applies because Florida is shown in Item 3.A. of the Information Page.

This endorsement adds the following provisions to Part Five - Premium, G. Audit of the policy:

We are required to complete the premium audit process no later than 90 days after policy termination. If you fail to return the final mail audit or refuse to cooperate in completing the final physical audit or final physical onsite audit, you must pay us a premium not to exceed three times the most recent estimated annual premium on this policy subject to the following conditions:

1. We make two good faith efforts to obtain the final mail audit or complete the final physical audit or final physical onsite audit.
2. We document the audit file regarding the two good faith attempts to obtain the required audit information.
3. After the two good faith attempts to obtain records or gain access to your premises or your worksites, we send a letter by certified mail to you advising you of the specific records that are required or the premises or worksites that must be accessed and the premium that will be charged if you continue to refuse access to the records, premises, and/or worksites.

If you do not provide all the specific records required and/or fail to permit access to your premises or worksites as applicable, and if we satisfy the conditions above on or before 90 days from the date of policy termination, we may continue to try and conduct the audit and/or reopen the audit for up to three years from the date of policy termination. Alternatively, we may immediately bill you a premium not to exceed three times the most recent estimated annual premium on this policy. If you provide all the specific records required and/or permit access to the premises or worksites as applicable to complete the premium audit process within the three-year period, we will determine your final premium in accordance with Part Five - Premium, E. Final Premium of the policy.

If we cannot complete the audit because you do not permit us to make a physical inspection of your operation or provide us with the necessary records, you must pay us \$500 to defray the costs of the audit. The \$500 charge may be imposed only if we have incurred actual travel expenses and we notified you in writing of the potential charge when access was denied. Denial of access to records and your premises or worksites by your agent or representative is considered the same as a denial by you.

If you understate or conceal payroll, or misrepresent or conceal employee duties to avoid proper classification for premium calculations or misrepresent or conceal information pertinent to the calculation and application of an experience rating modification factor, then you, your agent or your attorney, must pay us a penalty charge of 10 times the difference in the amount of premium that you paid and the amount that you should have paid and reasonable attorney's fees. The penalty may be enforced in the Florida circuit courts.

At the end of each quarter, you must submit to us a copy of the quarterly earnings reports you filed with the Florida Department of Revenue and any self-audits supported by the quarterly earnings report. The report must include a sworn statement by an officer or principal of your company attesting to the accuracy of the information in it. If you have an employee who suffered a compensable injury and was not reported as having earned wages on your last quarterly earnings report, you must indemnify us for all workers compensation benefits paid to or on behalf of the employee unless you establish that the employee was hired after the filing of the quarterly report, in which case you and the employee must attest to fact that the employee was employed by you at the time of injury.

This endorsement changes the policy to which it is attached and is effective on the date issued unless otherwise stated.  
**(The information below is required only when this endorsement is issued subsequent to preparation of the policy.)**

Endorsement Effective	12/19/2025	Policy No.	TWC4733671	Endorsement No.	0
Insured	Lake Overlook Unit 4 Association, Inc.			Premium \$	503
Insurance Company	Technology Insurance Company, Inc.				

Countersigned by \_\_\_\_\_

---

**FLORIDA INSUFFICIENT FUNDS ENDORSEMENT**

This endorsement applies because Florida is shown in Item 3.A of the Information Page.

Add the following to Part Six - Conditions of the policy:

**G. Insufficient Funds**

Our rules allow us to impose an insufficient funds fee of up to \$15 per occurrence if you make a payment of premium by debit card, credit card, electronic funds transfer (EFT), or electronic check that is returned, declined, or cannot be processed due to insufficient funds. However, we will not charge you an insufficient funds fee if the failure in payment resulted from fraud or misuse on your account from which the payment was made and such fraud or misuse was not attributed to you.

The Schedule below shows the insufficient funds fee we will impose if you make a payment of premium by debit card, credit card, electronic funds transfer (EFT), or electronic check that is returned, declined, or cannot be processed due to insufficient funds.

	<b>Schedule</b>
Insufficient Funds Fee	<u>\$20</u>

---

This endorsement changes the policy to which it is attached and is effective on the date issued unless otherwise stated.  
**(The information below is required only when this endorsement is issued subsequent to preparation of the policy.)**

Endorsement Effective	12/19/2025	Policy No.	TWC4733671	Endorsement No.	0
Insured	Lake Overlook Unit 4 Association, Inc.			Premium \$	503
Insurance Company	Technology Insurance Company, Inc.				

Countersigned by \_\_\_\_\_

---

**Florida Premium Due Date Endorsement**

This endorsement applies because Florida is shown in Item 3.A. of the Information Page.

Part Five-Premium, Section D. (Premium Payments) is replaced by the following provision:

**D. Premium Payments**

You will pay all premium when due. You will pay the premium even if part or all of a workers compensation law is not valid. The due date for audit and retrospective premiums is the due date specified in the billing for the policy.

This endorsement changes the policy to which it is attached and is effective on the date issued unless otherwise stated.  
**(The information below is required only when this endorsement is issued subsequent to preparation of the policy.)**

Endorsement Effective	12/19/2025	Policy No.	TWC4733671	Endorsement No.	0
Insured	Lake Overlook Unit 4 Association, Inc.			Premium \$	503
Insurance Company	Technology Insurance Company, Inc.				

Countersigned by \_\_\_\_\_

**FLORIDA EMPLOYMENT AND WAGE INFORMATION RELEASE ENDORSEMENT**

This policy requires you to release certain employment and wage information maintained by the State of Florida pursuant to federal and state unemployment compensation laws except to the extent prohibited or limited under federal law. By entering into this policy, you consent to the release of the information.

We will safeguard the information and maintain its confidentiality. We will limit use of the information to verifying compliance with the terms of the policy.

This endorsement changes the policy to which it is attached and is effective on the date issued unless otherwise stated.  
**(The information below is required only when this endorsement is issued subsequent to preparation of the policy.)**

Endorsement Effective	12/19/2025	Policy No.	TWC4733671	Endorsement No.	0
Insured	Lake Overlook Unit 4 Association, Inc.			Premium \$	503
Insurance Company	Technology Insurance Company, Inc.				

Countersigned by \_\_\_\_\_

Florida Cancellation and Nonrenewal Endorsement

This endorsement applies because Florida is shown in Item 3.A. of the Information Page.

Part Six—Conditions, Section D. of the policy is replaced by the following:

D. Cancellation

1. You may cancel this policy by giving a written request to us stating when the cancellation is to take effect. If you do not specify the cancellation effective date in your written request, the cancellation is effective on the date of your written request. We are not required to send notice of cancellation to you if you requested the cancellation in writing. Any retroactive assumption of coverage and liabilities under this policy may not exceed 21 days.
2. We may cancel this policy by giving the first-named insured written notice of cancellation, including in the written notice the reason or reasons for the cancellation.
  - a. We must give at least 10 days' written notice prior to the effective date of cancellation when the cancellation is for nonpayment of premium.
  - b. We must give at least 30 days' written notice prior to the effective date of cancellation when the policy has been in effect for 60 days or less and the policy is cancelled for reasons other than nonpayment of premium, except where there has been a material misstatement or misrepresentation or failure to comply with our underwriting requirements, then at least 45 days' written notice is required.
  - c. We must give at least 45 days' written notice prior to the effective date of cancellation when the policy has been in effect for 61 days or more and the policy is cancelled for reasons other than nonpayment of premium.
  - d. When the policy has been in effect for 61 days or more, we may cancel the policy only when there is
    - (1) a material misstatement
    - (2) a nonpayment of premium
    - (3) a failure to comply with our underwriting requirements that we established within 60 days of the effective date of coverage
    - (4) a substantial change in the risk covered by the policy, or
    - (5) a cancellation for all insureds under such policies for a given class of insureds.
3. If we decide not to renew this policy, we must give the first-named insured written notice of nonrenewal at least 45 days prior to the expiration date of the policy. The written notice will state the reasons for the nonrenewal.
4. If we fail to provide written notice of cancellation or nonrenewal to the first-named insured within the required time frame, the coverage provided to the named insured under this policy will remain in effect until 45 days after the notice is given or until the effective date of replacement coverage obtained by the named insured, whichever occurs first. The premium for the coverage will remain the same during any such extension period except that, in the event of failure to provide notice of nonrenewal, if the rate filing then in effect would have resulted in a premium reduction, the premium during such extension of coverage must be calculated based upon the later rate filing.
5. The policy period will end on the day and hour stated in the cancellation notice.
6. Any of these provisions that conflict with a law that controls the cancellation of the insurance in this policy is changed by this statement to comply with the law.

All other policy terms, conditions, and exclusions remain unchanged.

This endorsement changes the policy to which it is attached and is effective on the date issued unless otherwise stated. **(The information below is required only when this endorsement is issued subsequent to preparation of the policy.)**

Endorsement Effective	12/19/2025	Policy No.	TWC4733671	Endorsement No.	0
Insured	Lake Overlook Unit 4 Association, Inc.			Premium \$	503
Insurance Company	Technology Insurance Company, Inc.				

Countersigned by \_\_\_\_\_

Technology Insurance Company, Inc.

IMPORTANT NOTICE  
FLORIDA

---

**POLICY NUMBER**

TWC4733671

**POLICY PERIOD**

FROM: 12/19/2025 12:00:00 AM TO: 12/19/2026 12:00:00 AM

---

**INSURED**

Lake Overlook Unit 4 Association, Inc.

---

If you have a Drug-Free Workplace Program established and maintained in accordance with Florida law, and you would like to apply for the 5% premium credit that is available, please contact your insurance agent for a Drug-Free Workplace Premium Credit Program application. Re-certification is required annually.

The State of Florida has authorized a \$2500 deductible plan. There is no premium credit associated with this option. This deductible option may be endorsed to the policy subject to financial underwriting. Any amounts paid by the employer shall not apply to the experience rating of such employer but shall be reported for ratemaking purposes. If you are interested in this deductible plan, please contact your insurance agent for further details.

Policyholder Notice

FL-DFD 01 (10/04)

This endorsement changes the policy to which it is attached and is effective on the date issued unless otherwise stated.

(The information below is required only when this endorsement is issued subsequent to preparation of the policy.)

Endorsement Effective	12/19/2025	Policy No.	TWC4733671	Endorsement No.	0
Insured	Lake Overlook Unit 4 Association, Inc.			Premium \$	503
Insurance Company	Technology Insurance Company, Inc.				

Countersigned by \_\_\_\_\_